

SERVICE INFORMATION

M 138.0

MODELS AFFECTED: All Voce Media
MODEL NUMBERS: 605 & 607

Date: 04/17/15

RE: Voce Media Card Reader Blank Bezel Installation



Reason: To provide instructions on removal of Voce Media Card Reader & Mag Head Assembly and installation of blue Card Reader Blank Bezel in the field.

What's needed: See list of parts required:



Order:

Description	Part Number	QTY
Card Reader Blank Bezel (blue)	CR0023374	1
Blank Swipe Bracket	CR0023375	1
Screw, Phil Pan #6 – 19 X .38	4747171	4
Installation Instructions	M138.x	1

Tools Required:

Phillips screw driver T20 Torx Driver Painters Tape or an Assistant

SERVICE INFORMATION

Voce Kit Installation Instructions:

1. Remove power to the vender.
2. Unplug the Coin Mechanism.
3. Loosen the 2 Phillips screws securing the LED Driver Board Cover.



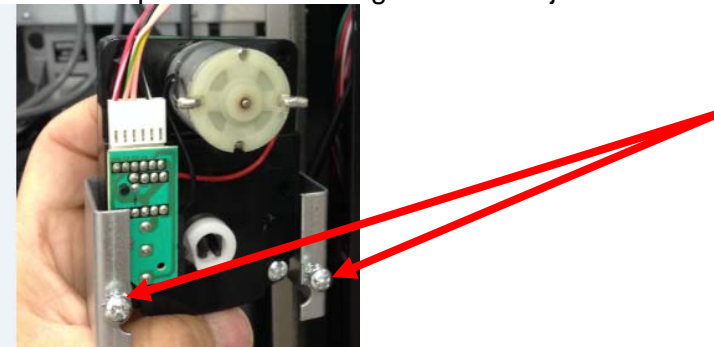
a.

4. Remove the LED Driver Board Cover.



a.

5. Unplug all harnesses from the LED Driver Board.
6. Loosen the 2 Phillips screws securing the Coin Reject Motor Assembly.



a.

SERVICE INFORMATION

7. Remove the Coin Reject Motor Assembly from the Monetary Door Assembly and let hang. Be careful not to damage harnessing or connectors. See picture 6.a.
8. Loosen the 3 Phillips screws securing the Monetary Door Assembly to the Main Door.



a.

9. Carefully remove the Monetary Door Assembly from the Main Door.

SERVICE INFORMATION

10. Unplug the Card Reader & Mag Head Assembly.



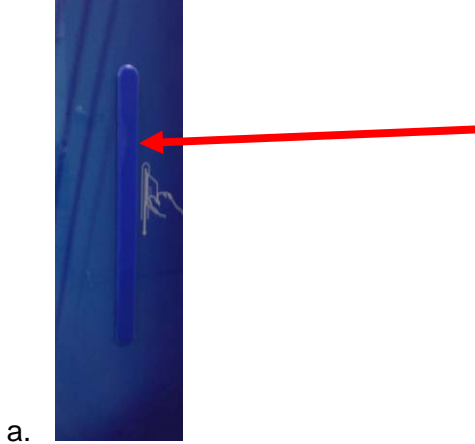
11. Remove the 2 T20 Torx Screws securing the Card Reader & Mag Head Assembly to the Main Door. One at the top of the Assembly and one at the bottom of the assembly.



12. Remove the Card Reader & Mag Head Assembly from the front of the vender.

SERVICE INFORMATION

13. Position the Blue Card Reader Blank Bezel in place from the front of the door.

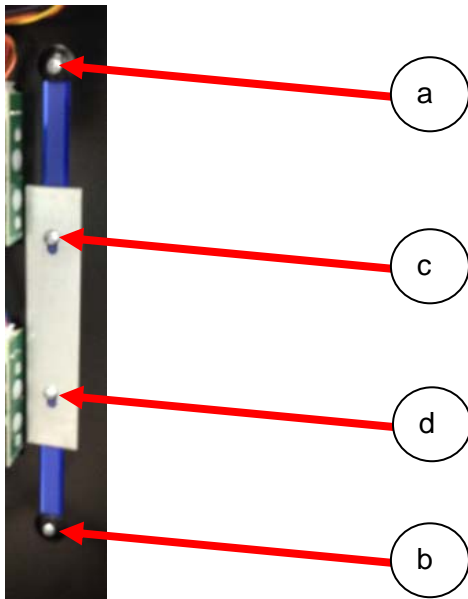


1. Note: you will need someone to hold it in place while you secure it or you will need to tape it in place while you secure it.

14. Using the 4 screws and Blank Swipe Bracket provided with kit secure by following steps.

Caution: Do not overtighten screws in the Card Reader Blank Bezel.

- a. Install the Top Screw in position and lightly tighten.
- b. Install the Bottom Screw in position and lightly tighten.
- c. Install bracket in position and secure with Middle Top Screw and lightly tighten.
- d. Install bracket Middle Bottom Screw and lightly tighten.



SERVICE INFORMATION

15. Close main Door and inspect part. If Card Reader Blank Bezel is overtightened it will appear warped. Loosen screws as needed to allow part to flatten out.



a.

16. Install the Monetary Door Assembly on the Main Door and secure by tightening the 3 screws loosened in step 8.
17. Install the Coin Reject Motor Assembly and secure by tightening the 2 screws loosened in step 6.
18. Plug the harnessing in the LED Driver Board that were unplugged in step 5.
19. Place LED Driver Board Cover back in position and secure by tightening the 2 screws loosened in step 3.
20. Turn power on to vender. Test for proper operation.